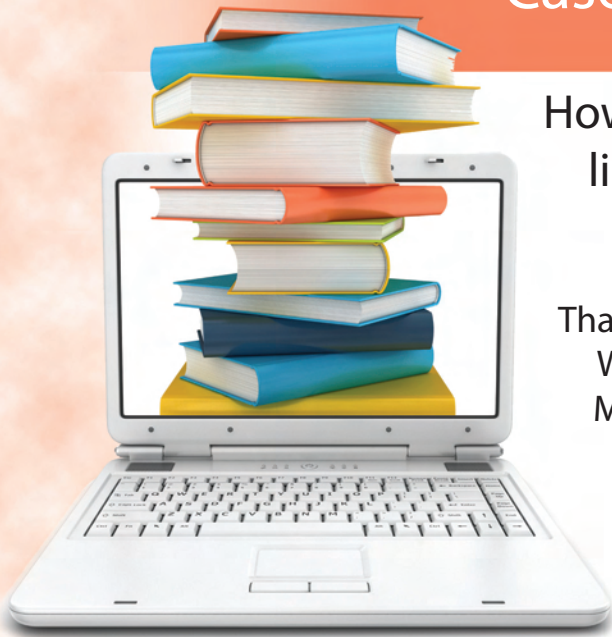


## Case in Point . . . #26.



How does this Austin, TX charter school make library management affordable with limited budgets?

That's easy:  
With Online Library  
Management System  
(LMS ONLINE) from

**GATEWAY**  
SOFTWARE CORPORATION

### The facts on Austin Discovery School:

Students: 430  
Teachers and Staff: 40  
Buildings: 4, with one library  
Library holdings: 8,900  
Circulation: about 70 books per day



*Elizabeth Switek, MLIS, CA  
MLIS Library and Information Sciences  
Certified Archivist since 1998*

### How LMS ONLINE from Gateway works for Austin Discovery School:

"It is so great to be internet based, because teachers and students can use our catalog from anywhere on campus, which saves time."

*--Elizabeth Switek, MLIS, CA  
Austin Discovery School, Austin TX*

### **Gateway is as necessary as it is affordable.**

"We really have no library budget. Charter Schools get much less money than public school districts. We figure it out as we go, but we are adding about 1,000 books a year with little or no budget. We get books through book fairs, and we have one special, anonymous donor."

### **LMS ONLINE took our library into the 21st century.**

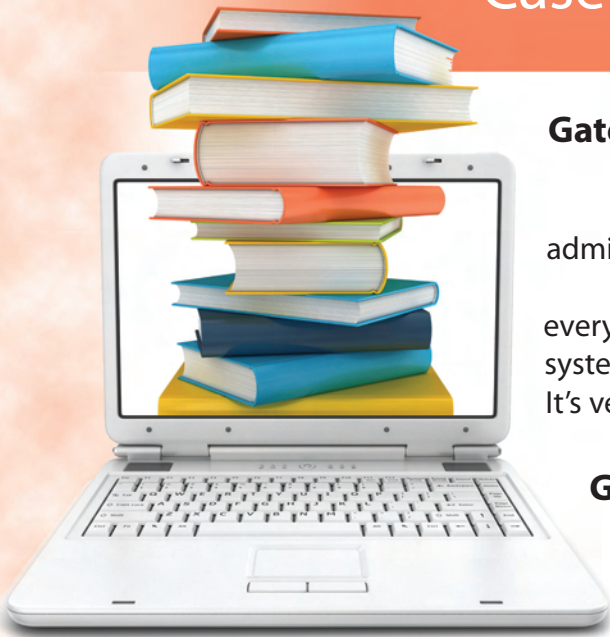
"I started the library from scratch seven years ago as a parent and volunteer, and had us up and running in five months. In January of 2010, an anonymous donor saw how much time I lost using a card checkout system. There were no subject headings and no searchable catalog. He made a donation that allowed us to automate."

### **Our volunteers, Gateway, and I are a great team.**

"We had 1,000 books when I started the library with only an Excel file, but when we got Gateway and automated last year, we had about 6,000 books. A parent took my Excel file and used some free software to convert our titles to MARC records. I sent these records to Gateway who put them into the online system, printed 6,000 smart barcodes for us, and we were up and running."

(more)

## Case in Point . . . #26 . . . continued.



### **Gateway encourages our students.**

"Our library program is strong and fully supported by the administration and teachers. We don't have reluctant readers.

Even today, as I have new books to add, Gateway does everything for me. They download records, and add them to our system – often before day is out and sometimes within the hour. It's very easy."

### **Gateway: easy to use.**

"I had a phone conference with Gateway. We spent about an hour going through the system. Seeing it in action was really helpful in letting me know I could handle such a big change in the library."

"It's also great to inventory other equipment and keep it separate – out of the searchable data base – as we've added bar codes to cameras, digital voice recorders, headphones, and other equipment."

### **Gateway has become my 'IT Department'**

"I talked to other schools they've served before we committed to Gateway. One had done a full search of their options, and they realized Gateway does everything they needed done...but Gateway's customer service was heads above the rest."

"Gateway is my technical support...we don't have an 'IT' person. I don't have a cataloging department or circulation assistance. I'm a one woman library! My calls to Gateway don't go to voice mail...there is always someone there to lead me through the process."

Gateway's online library management system – LMS ONLINE. That's how Austin Discovery School successfully manages its library on a limited budget. Tell us what we can do for you and your library.

Call Cheryl at **800.735.3637**  
or email **ckallem@gscweb.com**

to **set up a no-obligation online demonstration** of LMS ONLINE and let us prove that going online with your library management system will make your library more efficient . . . affordably.

Call or email today. We look forward to hearing from you.

**GATEWAY**  
**SOFTWARE CORPORATION**

PO Box 1148 • 205 S Washington Ave • Laurel MT 59044  
800.735.3637 • 406.628.9879 • FAX 406.628.5781

[www.gscweb.com](http://www.gscweb.com)